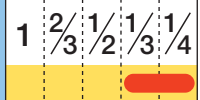




**For Security**  
**Fixed Focal**

# YF2.8A-2

Applicable camera (model)



**FIXED**

Fixed Focal

**WIDE**

Wide Angle

**MANUAL**

Manual Iris

**CS-mt**

CS Mount

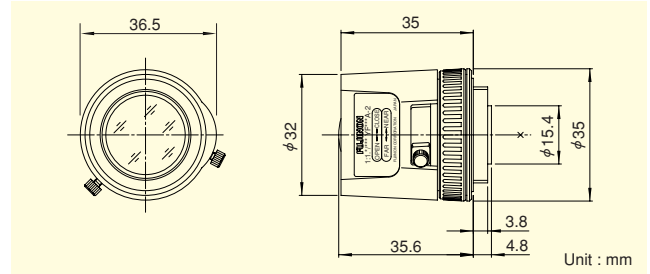
**F1.3**

Wide Aperture Rate



- Super wide angle lens with the horizontal field angle of 96 degrees or more (when used on 1/3" cameras).
- Compact and lightweight design of 40g, best suited for built-in lenses.
- Wide aperture of F1.3, optimizing the performance at low lighting intensity.

\*Photograph is a similar model.



Unit : mm

FIXED FOCAL LENGTH LENSES

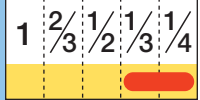
Focal Length (mm)		2.8
Iris Range		F1.3 ~ Close
Operation	Focus	Manual
	Iris	Manual
Angle Of View (H×V)	1/3"	96°15' × 71°51'
	1/4"	71°51' × 53°45'
Focusing Range (From Front Of The Lens) (m)		∞ ~ 0.1
Object Dimensions at M.O.D. (H×V) (mm)	1/3"	241 × 157
	1/4"	157 × 110
Back Focal Distance (in air) (mm)		8.11
Exit Pupil Position (From Image Plane) (mm)		166
Filter Thread (mm)		—
Mount		CS
Mass (g)		40
Remarks		



**For Security**  
**Fixed Focal**

# YF4A-2

Applicable camera (model)



**FIXED**

Fixed Focal

**MANUAL**

Manual Iris

**CS-mt**

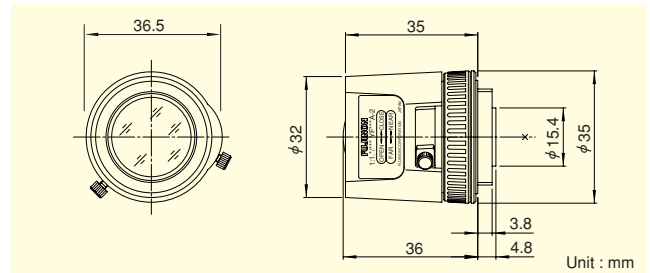
CS Mount

**F1.2**

Wide Aperture Rate



- Compact and lightweight design of 30g, best suited for built-in lenses.
- Wide aperture of F1.2, optimizing the performance at low lighting intensity.



Unit : mm

Focal Length (mm)		4
Iris Range		F1.2 ~ Close
Operation	Focus	Manual
	Iris	Manual
Angle Of View (H×V)	1/3"	65°21' × 49°27'
	1/4"	49°27' × 37°15'
Focusing Range (From Front Of The Lens) (m)		∞ ~ 0.1
Object Dimensions at M.O.D. (H×V) (mm)	1/3"	132 × 99
	1/4"	99 × 73
Back Focal Distance (in air) (mm)		8.62
Exit Pupil Position (From Image Plane) (mm)		727
Filter Thread (mm)		—
Mount		CS
Mass (g)		30
Remarks		